

MONTHLY MEMBERSHIP PROGRESS REPORT

LOCATION INDIA

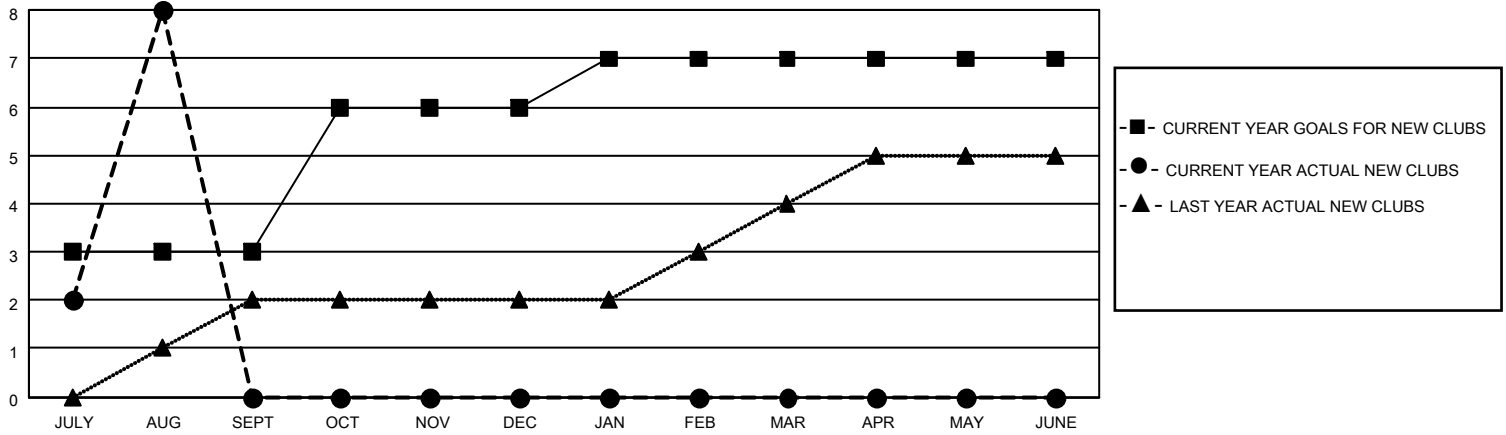
District 322C3

Results as of: 8/31/2023

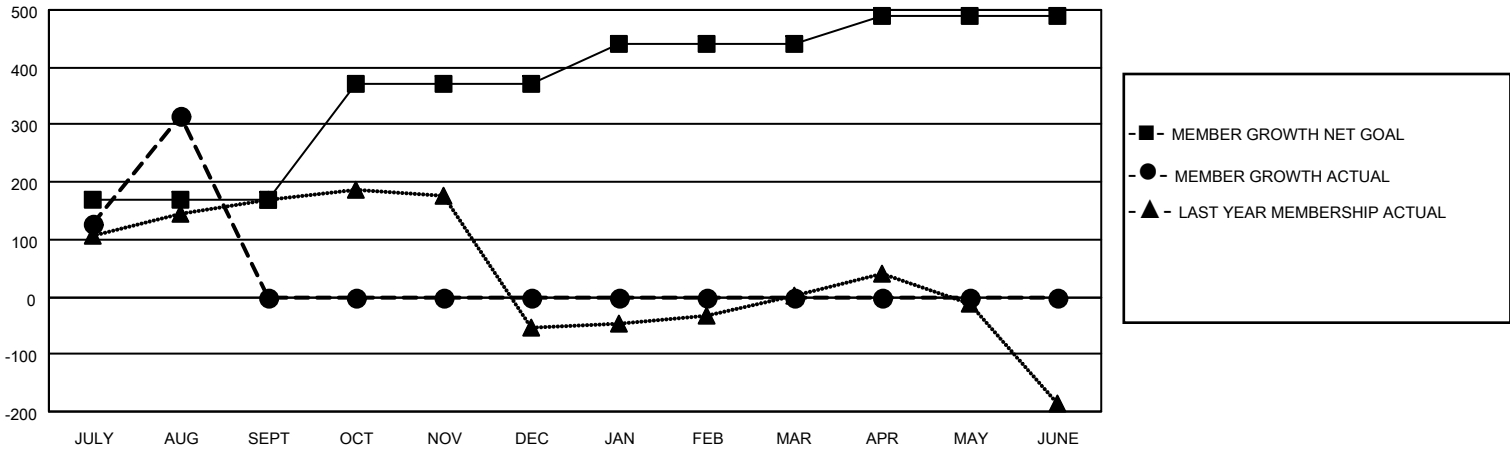
| Clubs | | | |
|-----------------------|---------------|-----------|---------------|
| RESULTS FOR 2023-2024 | | | |
| QUARTER | NEW CLUB GOAL | NEW CLUBS | DROPPED CLUBS |
| JULY/AUG/SEPT | 3 | 8 | 1 |
| OCT/NOV/DEC | 3 | 0 | 0 |
| JAN/FEB/MAR | 1 | 0 | 0 |
| APR/MAY/JUNE | 0 | 0 | 0 |

| Members | | | |
|-----------------------|------------------------|----------------------|--|
| RESULTS FOR 2023-2024 | | | |
| QUARTER | MEMBER GROWTH NET GOAL | MEMBER GROWTH ACTUAL | DROPPED MEMBERS ACTUAL (including transfers) |
| JULY/AUG/SEPT | 170 | 390 | 60 |
| OCT/NOV/DEC | 200 | 0 | 0 |
| JAN/FEB/MAR | 70 | 0 | 0 |
| APR/MAY/JUNE | 50 | 0 | 0 |

GOALS AND ACTUAL NEW CLUBS CUMULATIVE



GOALS AND ACTUAL MEMBERS CUMULATIVE



DROPPED CLUBS: 1

54 CLUBS OF 96 ADDED 1 OR MORE NEW MEMBERS

GENDER DISTRIBUTION

| | |
|----------------------|----------------|
| MALE | 2,539 (73.57%) |
| FEMALE | 912 (26.43%) |
| NON BINARY | 0 (0.00%) |
| PREFER NOT TO ANSWER | 0 (0.00%) |

DROPPED MEMBERS

[CLICK HERE FOR CUMULATIVE MEMBERSHIP DATA](#)

| | |
|----------------|-----------|
| DECEASED | 1 |
| CLUB CANCELLED | 0 |
| OTHER | 59 |
| TOTAL | 60 |

TOTAL FAMILY UNIT MEMBERS 2,106

FAMILY MEMBERS PAYING HALF DUES 1,354